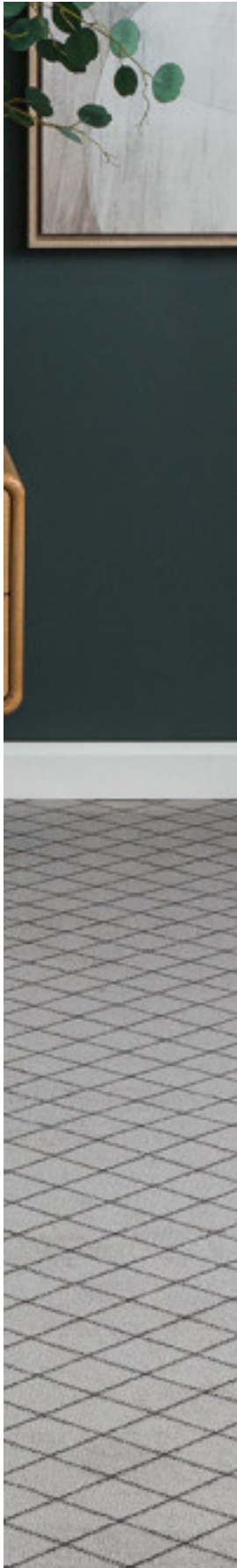


Artisan



13
Kosi Cross

PR: 10.16cm (W) x 10.16cm (L)



16
Diamantina

PR: 15.24cm (W) x 15.24cm (L)



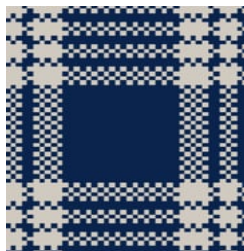
22
Persian Red

PR: 91.44cm (W) x 104.50cm (L)



33
Persian Blue

PR: 91.44cm (W) x 104.50cm (L)



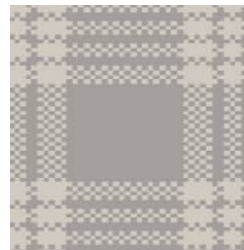
34
Tartan Bells

PR: 15.24cm (W) x 15.24cm (L)



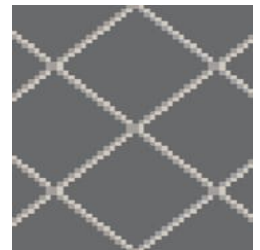
73
Persian Blonde

PR: 91.44cm (W) x 104.50cm (L)



90
Tartan Quartz

PR: 15.24cm (W) x 15.24cm (L)



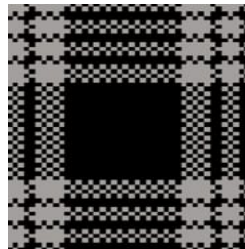
92
Hotham Cross

PR: 28cm (W) x 28cm (L)



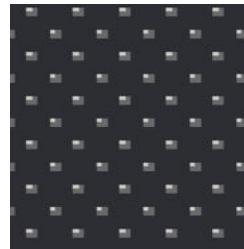
93
Rivet

PR: 2.90cm (W) x 3.63 (L)



95
Tartan Rock

PR: 15.24cm (W) x 15.24 (L)



97
Atom

PR: 2.90cm (W) x 3.63 (L)



98
Dark Net

PR: 10.16cm (W) x 10.16cm (L)

Artisan

This nostalgic flooring is making a well deserved comeback. Our Artisan range is ready to grace the decades ahead with timeless elegance from the past. Crafted from a rich blend of premium wools, this quality Axminster combines comfort with durability. Artisan features a diverse assortment of classic and contemporary patterns in subdued hues or bold pops of colour, specifically designed to complement a variety of interiors.

Technical Data

Type:	Wool Carpet	Total Product Thickness:	11 (+/- 1)mm
Pile Height:	8 (+/- 1)mm	Yarn:	80% Wool / 20% Synthetic
Weight:	34 oz	Gauge:	NA
Roll Width:	3.66m	Pattern Repeat:	Self Match - see colour specifications
Colours:	12	Country of Origin:	China
Secondary Backing:	6oz Jute	Installation Method:	Dual Bond Recommended

Performance

Light Fastness:	(ISO 105-B-02-1994) 5-6	Light Reflectance Values:	Available on Request
ACCS Rating:	Residential Extra Heavy Duty & Stairs - 6 Star Contract Heavy Duty - 3 Star		

Sustainability

Accreditation:	Manufactured under a quality and environmental system certified and complying with ISO 9001 and ISO 14001 by an accredited certification body.
Green Star:	Environmental Certification Scheme (ECS). Level 4 - Certificate #20036
Indoor Air Quality:	Green Building Council Compliant for VOC emission rate limits



Residential Extra Heavy Duty & Stairs - 6 Star



Contract Heavy Duty - 3 Star



ECS Level 4



Fire Rated Carpet



Premium



Insect Deterrent Treatment

Artisan

Manufacturing Standards:

All specifications and colours are subject to manufacturing tolerances and may be changed or discontinued without notice. Product images are for reference only; actual colours may vary from samples due to printing variations, dye lot differences, production runs, and lighting conditions. All variations are within industry standards.

Quality Recommendation:

For homes where you'll stay 5+ years, choose an independently rated Residential Extra Heavy Duty carpet.

Natural Carpet Characteristics:

Depending on style and fibre, your carpet may develop natural characteristics over time:

Permanent Pile Reversal/Shading: Cut pile and cut-and-loop carpets may appear lighter or darker in different areas of the same installation (also called watermarking or pile reversal). This is an inherent characteristic of these carpet styles and does not constitute a manufacturing defect.

Tracking: Footprint impressions are common on plush cut pile surfaces, especially in high-traffic areas. Vacuuming removes these marks, though they may reappear with use.

Other characteristics: Panelling, yellowing, shift lines, or phasing may develop depending on carpet style and fibre.

Pattern Matching:

Patterned carpets naturally vary in width and length. Skilled installers will achieve close pattern matches in most cases, though exact matches cannot be guaranteed.

Installation:

All Feltex carpets must be professionally installed following AS/NZS 2455.1:2007 standards and Feltex NZ Installation Instructions. All seams must be sealed (width and length) per seam sealer manufacturer's recommendations.

Maintenance:

Vacuum 1-2 times weekly. Professionally steam clean every 12-18 months.

Warranty:

All Feltex carpets carry a comprehensive warranty supported by New Zealand after-sales service. As a New Zealand manufacturer, we recognise all consumer rights under the Consumer Guarantees Act 1993 and match any equivalent performance guarantee offered in the marketplace at the time of purchase. Commercial warranties are issued project-by-project with specific terms and conditions.

For detailed warranty information, installation guidelines, care instructions, and carpet characteristics, visit www.feltex.com or call 09 268 3300.

Test results and certificates available on request.