

Kingsgate Town 48oz



TECHNICAL SPECIFICATIONS

Country of Origin:	New Zealand	Colours:	9 Standard
Yarn:	90% Wool / 10% Nylon	Surface Texture:	Level Loop Pile
Gauge:	39.4/10cm (1/10th Gauge)	Total Product Thickness:	9 (+/- 1.0)mm
Pile Height:	6 (+/- 1.0)mm	Pile Weight:	1628.00g/m ² (48oz)
Backing:	Jute	Installation Method:	Direct Stick, Conventionally Laid or Dual Bond
Type:	Commercial Broadloom	Roll Width:	3.66
Pattern Repeat:	Not Applicable		

PERFORMANCE

Anti-Static:	(AATCC 134) <3.5KV at 21°C & 20% Relative Humidity
Flammability:	Meets the requirements of NCC Spec. C1.10 relating to fire hazard properties for flooring in Class 2-9 buildings (including health and aged care buildings)~
Light Reflectance:	Available on Request
Stain Resistance:	Natural Wool Fibre Stain Resistance
ACCS Rating:	Residential Extra Heavy Duty & Stairs - 6 Star, Contract Heavy Duty - 3 Star
Contract Warranty:	GH Commercial provides comprehensive warranties for our products. All warranties are issued on a project by project basis. Please contact us to discuss your requirements further.

SUSTAINABILITY

PVC Minimisation:	PVC Free
Indoor Air Quality:	Green Building Council compliant for VOC emission rate limits
Product Transparency:	Declare Red List Free
Green Star:	Environmental Certification Scheme (ECS). Level 4+. Achieves 12+ Points meeting Best Practice Requirements - Certificate #98216
Accreditation:	Manufactured under a quality and environmental system certified and complying with ISO 9001 and ISO 14001 by an accredited certification body.



Made in New Zealand



PVC Free



Residential Extra Heavy Duty & Stairs - 6 Star



Contract Heavy Duty - 3 Star



Green Building Council



ISO 9001 Quality Management System



ISO 14001 Environment Management System



Wool Blend



Level Loop Pile



Mid Range



Declare® Red List Free



Declare

Kingsgate Town 48oz

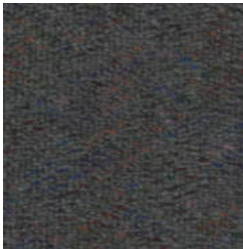


ECS Level 4+

Kingsgate Town 48oz



285
Riverside



725
Irongate



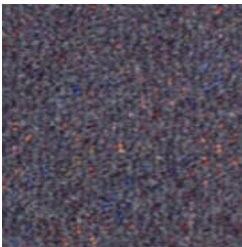
790
Slate



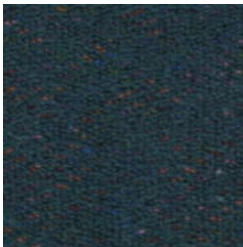
795
Black Bird



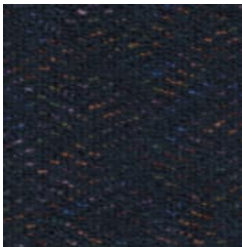
799
Onyx



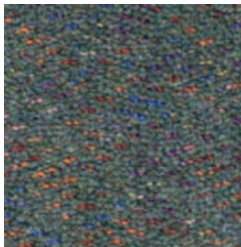
880
Plutonium



890
Reef



895
Ocean



970
Malachite

Kingsgate Town 48oz



Specifications and colourations are subject to manufacturing tolerances. As part of the GH Commercial continuous improvement program, GH Commercial reserves the right to change the specifications of or delete colours of this product without notice. While all care is taken, product images may vary in colour due to possible printing process variations. Images do not seek to duplicate the exact visual appearance, but serve merely as a guide or point of reference.

All GH Commercial carpets must be installed in accordance with the latest AS2455 and any relevant GH Commercial Installation Instructions. ~Test results and certificates are available on request. *This guarantee is in addition to any rights consumers may have under Australian consumer laws. Terms and conditions apply - for full information in respect to the scope of the guarantee, please contact your GH Commercial Account Manager or our Head Office.