



LAMINATE FLOORING

# Luxe Grain

Natural Elegance | Durable | Waterproof Resistant



# Everyday Living, Made Better



## Overview

Luxe Grain brings together the classic look of natural timber with the strength and practicality needed for modern homes. With its realistic texture, beautiful detailing, and dependable performance, it's designed to enhance any space with natural style and long-lasting confidence.

## Performance



Designed for everyday spills, Aqua Armour provides up to 36 hours water resistance in 8mm and 72 hours in 12mm.



The Uniclic locking system ensures each plank fits securely in place, creating a stable, quality finish for homes.



A P3 slip rating ensures confidence underfoot, while a low-sheen finish reduces glare and marks for a clean appearance.



EIR delivers a realistic timber look and feel, enhanced by an ultra-matte surface for added depth and character.



Commercial Suitable



Eco Friendly



HD Digital Imagery



Quick & Easy Installation



Durable



Family Friendly



Pet Friendly



Quiet Underfoot

# Built for Real Living



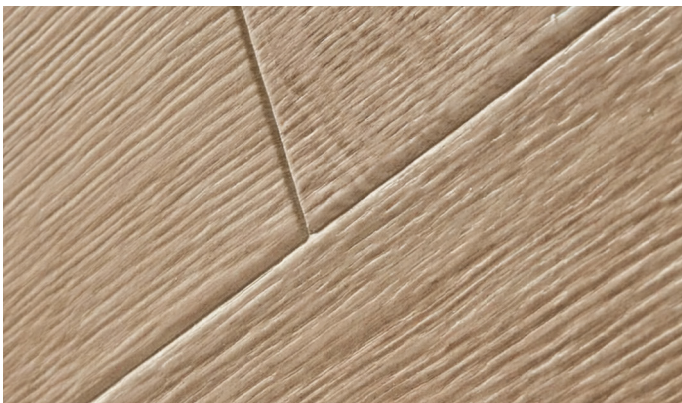
## Handles Everyday Spills

Low 3-5% swell rate helps reduce movement from moisture, keeping your floor stable over time.



## Clean, Natural Look

Ultra matte finish reduces glare, fingerprints and visible wear for a consistently fresh appearance.



## Real Timber Appearance

Painted bevel edges add subtle depth and definition, creating a more authentic timber look.



## Built to Last

Waxed edges provide added protection against moisture, supporting long-term durability.

## Product Breakdown



### Wear Layer

A transparent, hard-wearing surface that protects against scratches, stains, and everyday wear.

### HD Photographic Layer

High-definition imaging brings your chosen design to life with stunning realism and depth.

### HDF Core

A dense core that provides strength, stability, and impact resistance.

### Uniclic Locking System

The simple locking system enables smooth plank connection, delivering a fast, secure and seamless installation.

### Balance Layer

A bottom stabilising layer that helps the floor stay level and secure, reducing the chance of lifting or shifting over time.

# Specifications & Features

## Luxe Grain 8mm

Plank Size	234MM X 1515MM
Total Thickness	8MM
Abrasion Classification	AC4
M <sup>2</sup> per Carton	2.85M <sup>2</sup>
Quantity per Carton	8 Planks
Slip Rating	P3
Surface Finish	Glare & Light Mitigating Matte Finish
Click System	Uniclic

## Luxe Grain 12mm

Plank Size	234MM X 1515MM
Total Thickness	12MM
Abrasion Classification	AC4
M <sup>2</sup> per Carton	2.13M <sup>2</sup>
Quantity per Carton	6 Planks
Slip Rating	P3
Surface Finish	Glare & Light Mitigating Matte Finish
Click System	Uniclic

## Thickness & Water Resistance



With up to **36 hours of water resistance**, the 8mm range is ideal for residential spaces with light traffic.



With up to **72 hours of water resistance**, the 12mm range is ideal for high-traffic, commercial areas.

## Suitable Room Types



Bedroom



Dining



Hallways & Stairs



Kitchen



Laundry



Lounge



# Colour Range



American Oak



Ashen Oak



Feature Blackbutt



French Oak



Ghost Gum



Majestic Oak



Natural Oak



QLD Spotted Gum



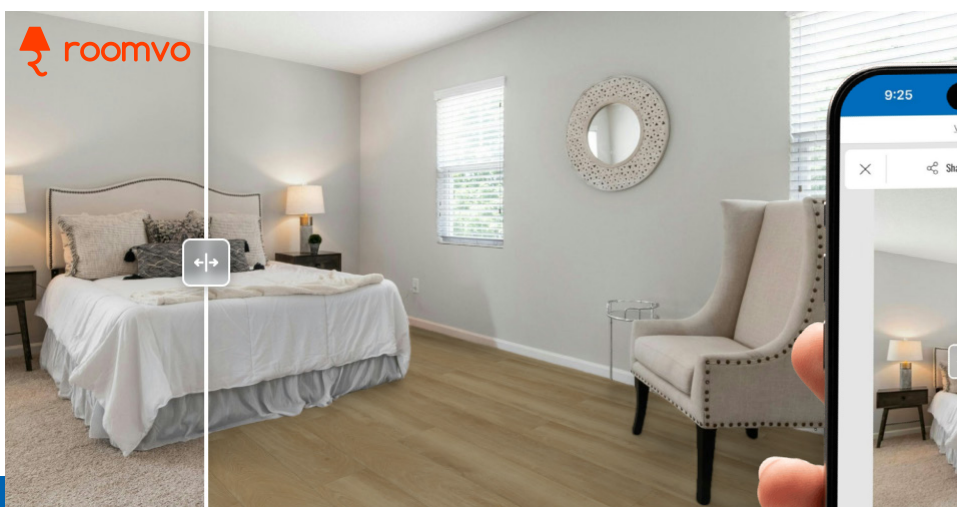
Southern Spotted Gum



Valley Oak

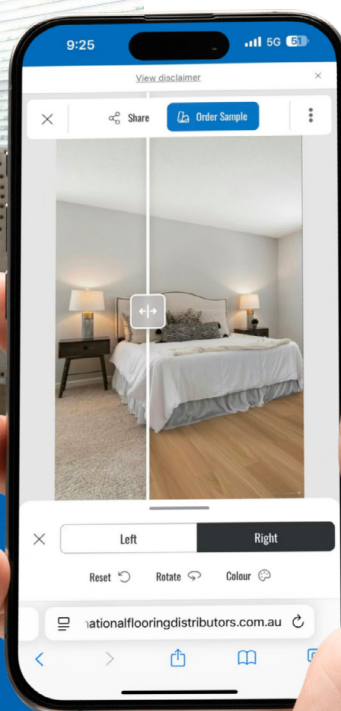


Images are a representation of colour and texture only. It is recommended to request a full size plank from your nearest flooring retailer prior to product selection.



Visualise your dream floor with our Room Visualiser. Upload your space or try a demo room to explore colours, textures, and styles with confidence. Scan the QR code or click below:

Try it Now





Visualise It.  
Love It.  
Choose It.



## Contact Us

National Flooring Distributors  
58 Blanck Street,  
Ormeau QLD Australia 4208

 (07) 3806 2666  
 [info@nfd.com.au](mailto:info@nfd.com.au)

## Follow Us On



@National Flooring Distributors

@nfd.com.au

## Explore the Full Range

Scan the QR code or visit:  
[www.nfd.com.au](http://www.nfd.com.au)

